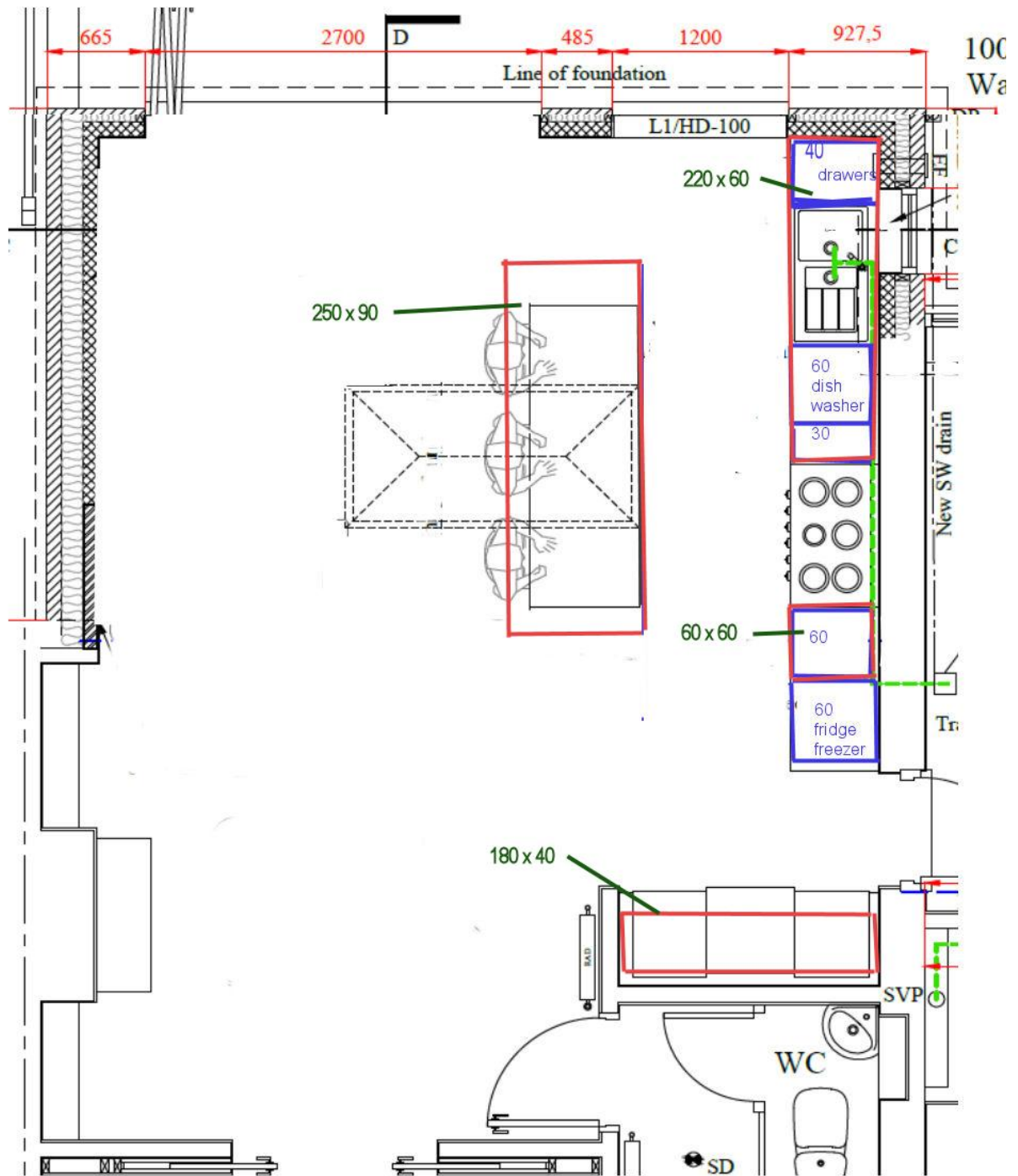


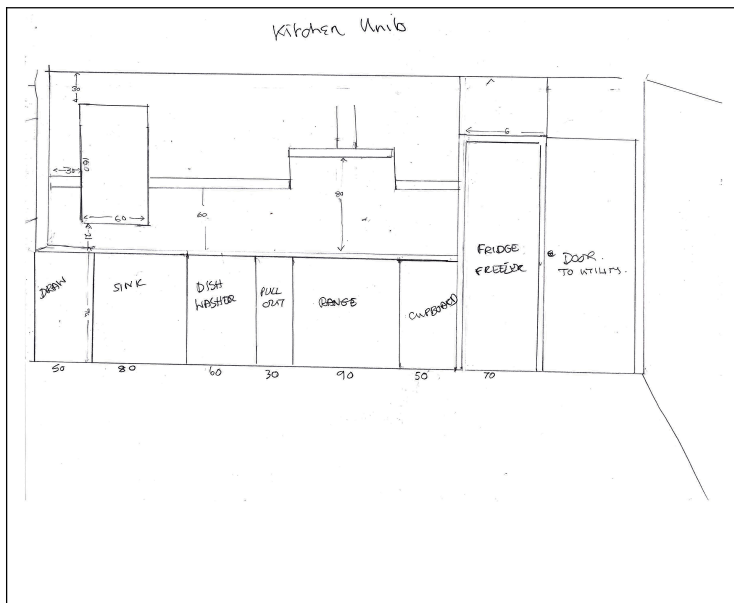
WORKTOPS DIMENSIONS



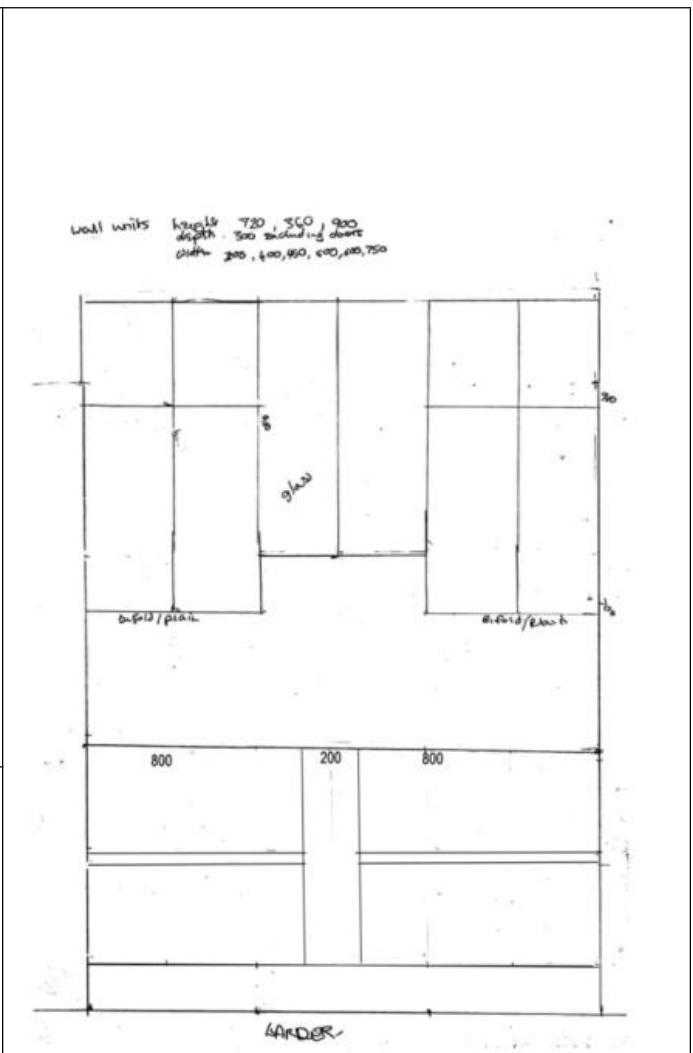
HEIGHT OF CEILING IN DAYROOM 241

Slabs required

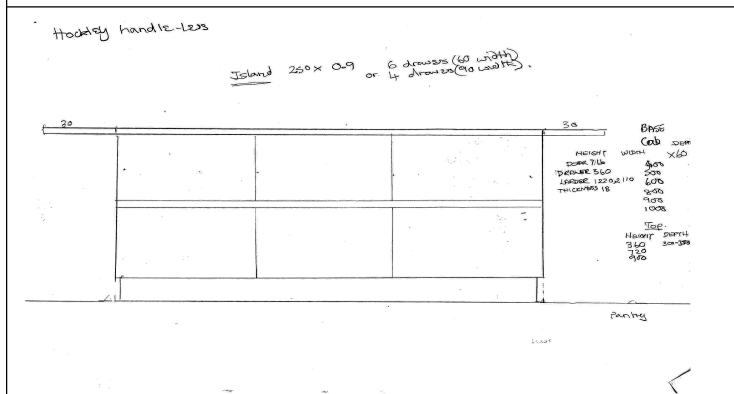
- | | |
|---|----------|
| a. Kitchen Island | 250 x 90 |
| b. Kitchen worktop | 220 x 60 |
| Kitchen worktop between oven and fridge/freezer | 50 x 60 |
| c. Larder worktop | 180 x 40 |
| Or if base 60 | 180 x 60 |



Kitchen layout



Larder layout



Island layout

Island and kitchen

Hockley dark walnut or dark oak – drawers handleless

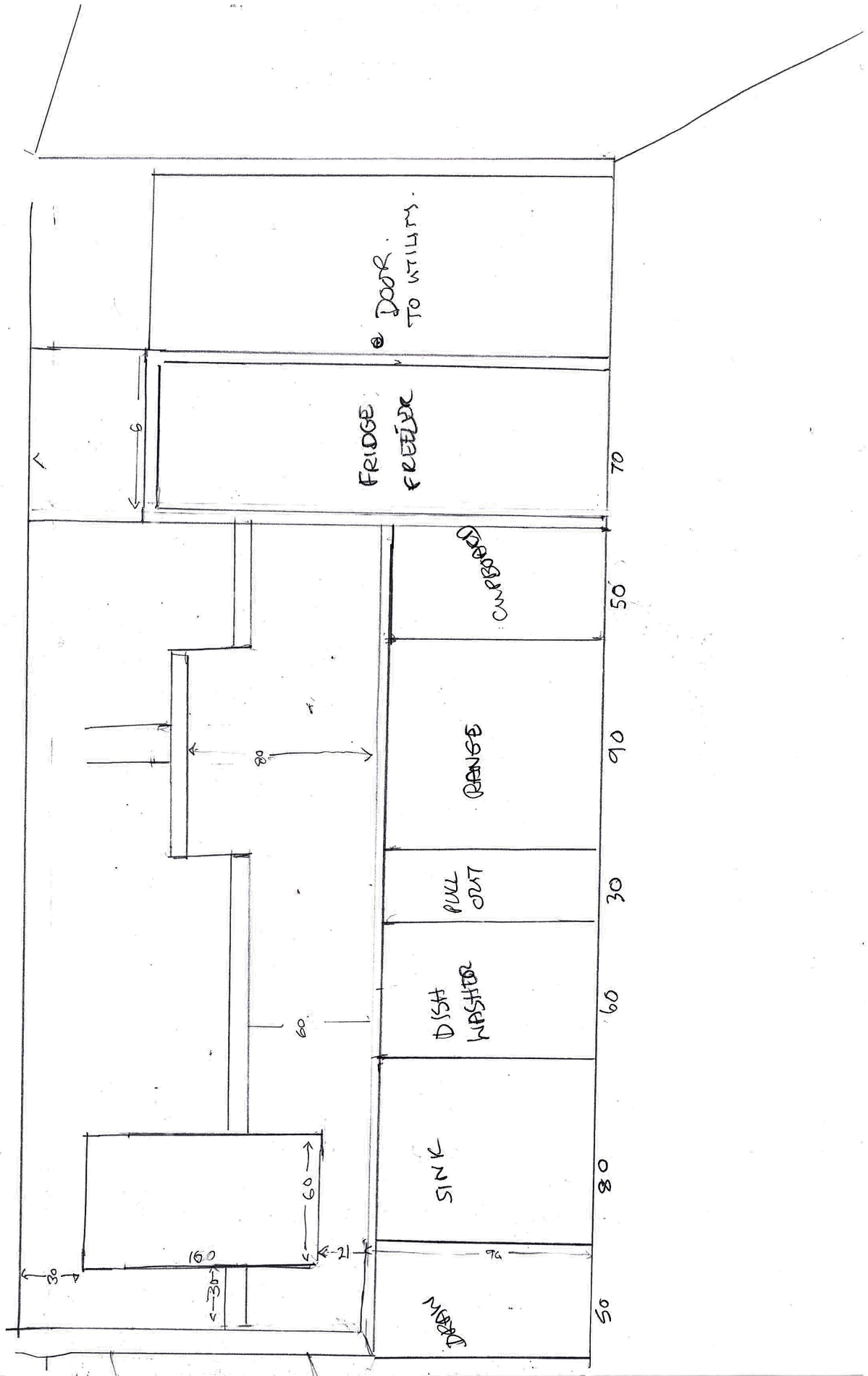
Work top Dexton Argo

Larder

Hockley and Argo plus option to see and quote same but in timber

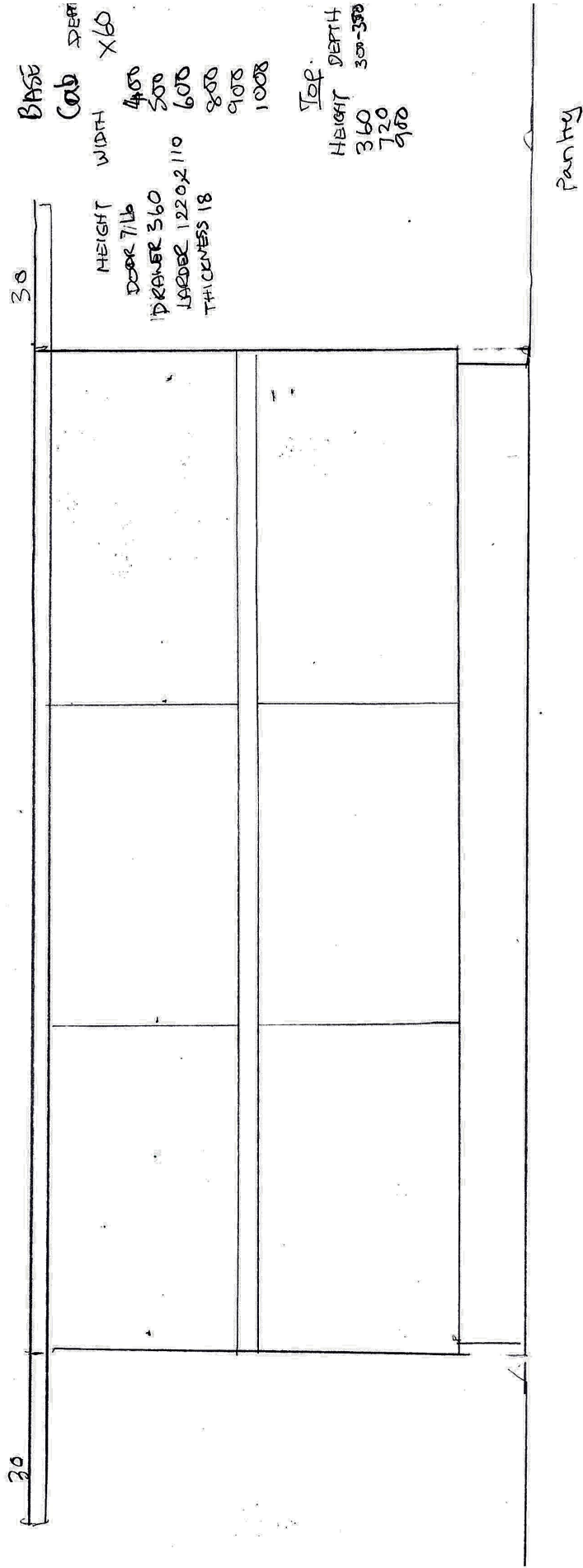
As the Dexton Argo is probably very expensive for largish splashbacks is it possible to quote as well for the aluminium ones to see if that will be better budget

Kitchen Units



Hockey handle-less

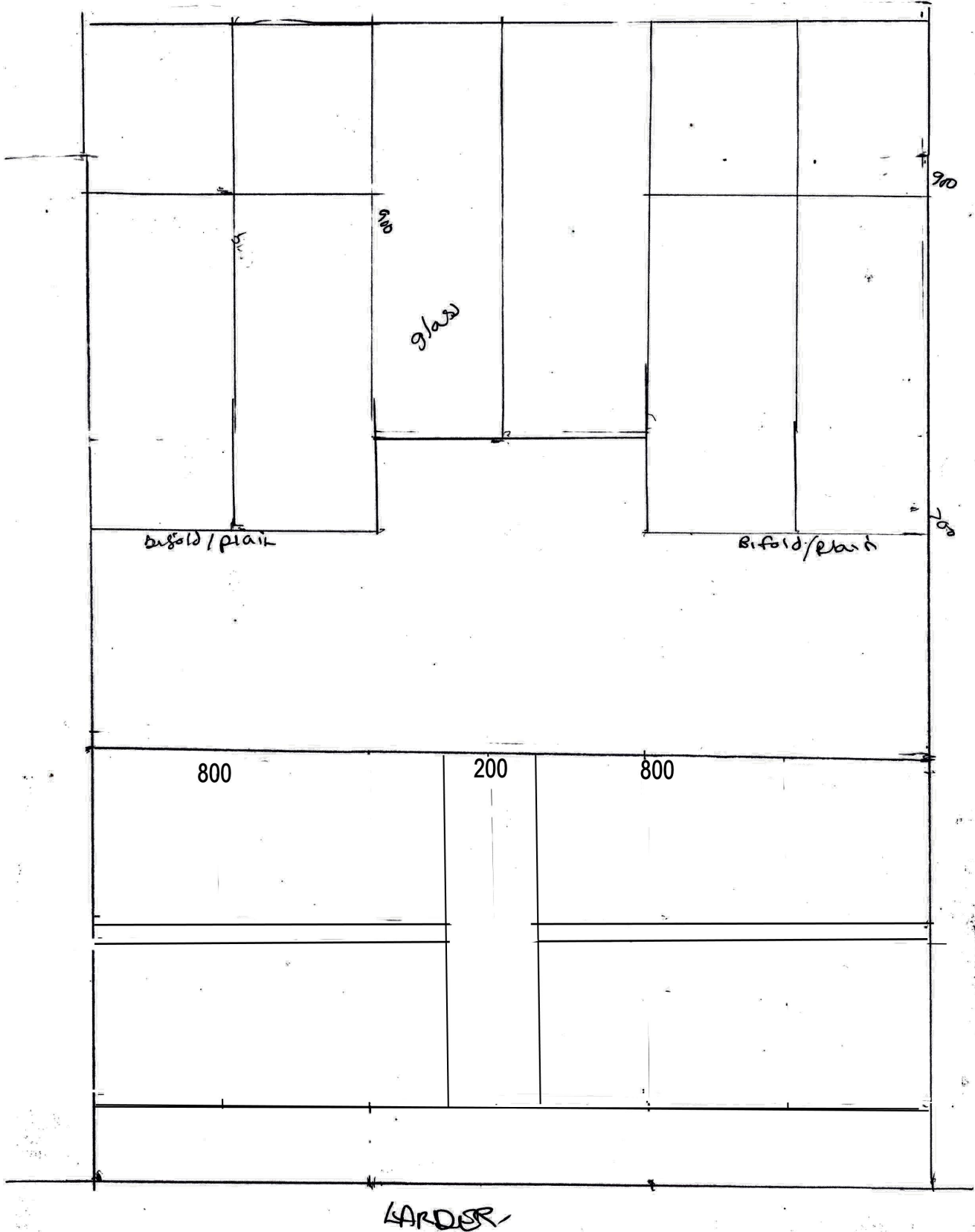
Island 250 x 0-9 or 4 drawers (60 width) or 4 drawers (90 width)



Island

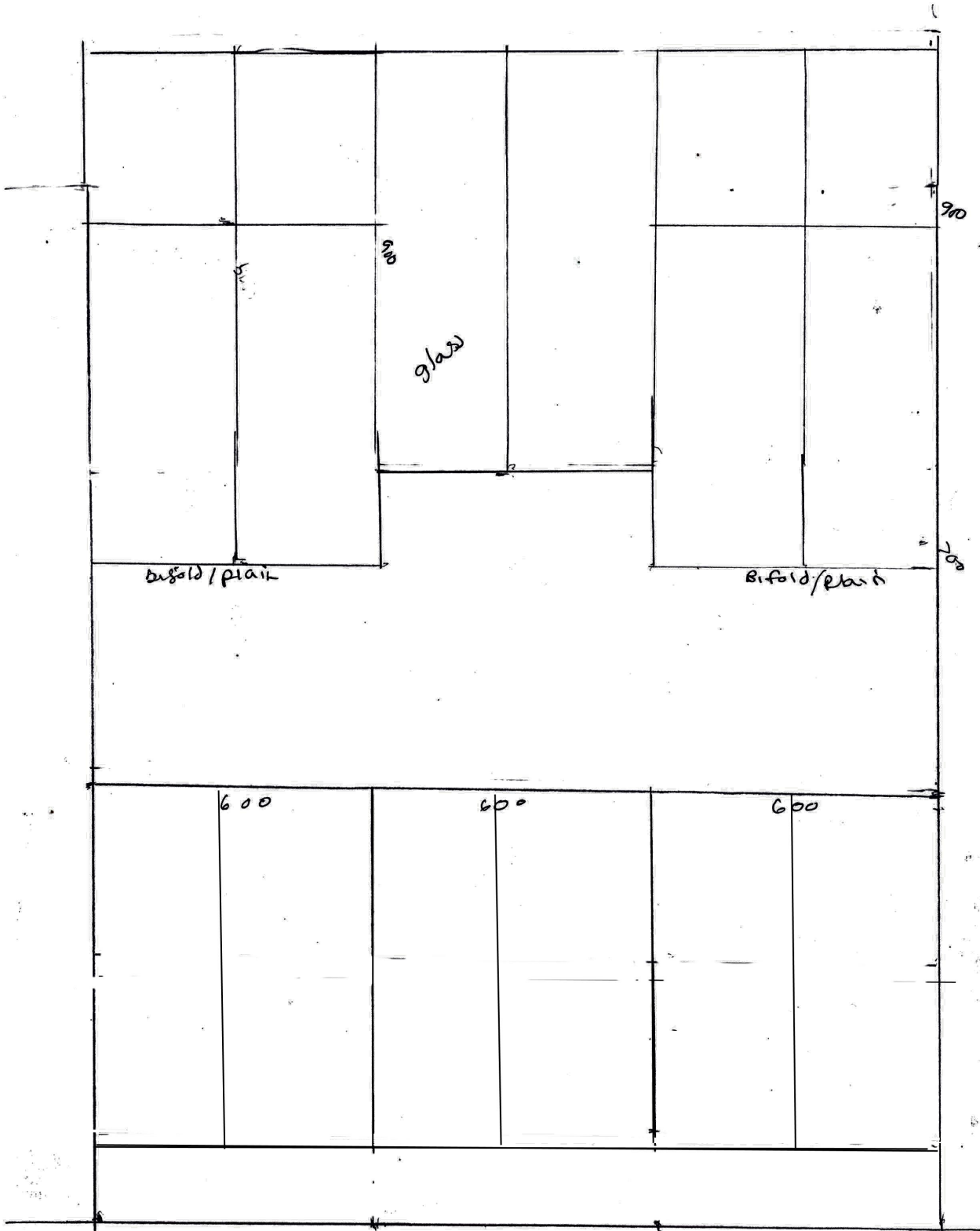


wall units height 720, 360, 900
depth 300 excluding doors
width 300, 400, 450, 500, 600, 750



EXAMPLE USING DRAWERS – THE BOTTOM CABINETS HAVE TO BE 600 DEPTH FOR DRAWERS – THIS GIVES 4 X 800 DRAWERS +1 200 PULLOUT

wall units height 720, 860, 900
depth 300 excluding doors
width 300, 400, 450, 500, 600, 750



KITCHEN

EXAMPLE USING CUPBOARDS – THE BOTTOM CABINETS GIVES 3 X 600 CUPBOARDS WITH EITHER BIFOLD DOORS OR PLAIN OR COULD BE 2 X 800 + 1 200 PULLOUT.



Easton 1.5 Bowl No Drainer Inset/ Undermount Stainless Steel Kitchen Sink

★★★★★ (4 Reviews) [Write a Review](#)

PRODUCT CODE: Choose a product

Left Hand

Right Hand

Customise a washing area to suit any layout by choosing this 1.5 stainless-steel washbowl that can be fitted either flush to a work surface or below it.

Featuring a brushed finish, rectangular shape, and silver colour, this sink-bowl has an engineered look that will enhance an industrial interior. It is made from stainless steel, which is sturdy and offers long-lasting use. Meanwhile, the 1.5 bowl means there is a dedicated space for rinsing larger cookware and smaller utensils. This product comes in a left or right-hand option and is supplied with a waste kit for a comprehensive fit.

- Waste Included

HAWK
K
&
B



FIVE TOP REASONS TO WORK WITH HAWK K&B

Whether you are considering designing a brand-new kitchen, or pondering giving your bathroom a renovation, it is imperative that you work alongside a professional, reputable company.

[> READ MORE <](#)





This is the kitchen end of the day room



KITCHEN WORKTOP IN BLACK
LARDER IN RED